

Forensic Examination Quality Photos

A forensic examination quality photo is defined as any photograph that will be used for comparison and identification purposes. The most common examples being footwear, fingerprint, tool mark and bite mark photos.

The standard requirement for any forensic examination quality photo is that it must include a scale and that scale must be placed at the same level as the detail being photographed. This means that the scale may need to be raised or lowered as appropriate.

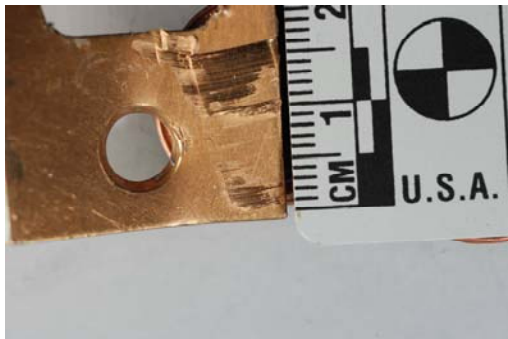


Improper Scale Placement

Proper Scale Placement

Sharp focus, good depth of field and proper lighting are also very important. Use a macro lens and get close to capture the fine detail.

SAMPLE



90° alignment of the camera's imaging plane to the surface bearing the impression is critical. In the field, a tripod should be used and for work in your lab or office, a copy stand is needed.

